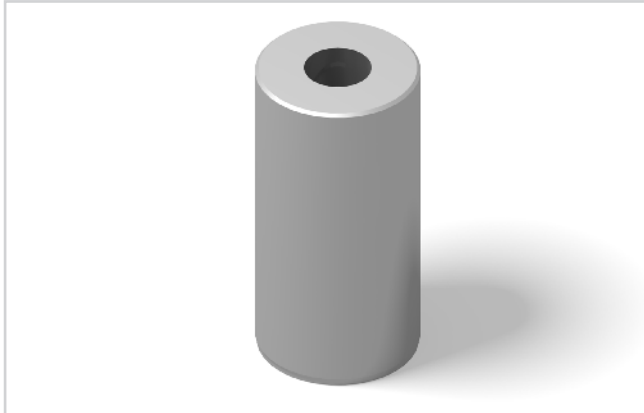


# SCHNEIDBUCHSE DIN 9845, FORM A

Artikel-Nr.: B21.d<sub>1</sub>.l<sub>1</sub>

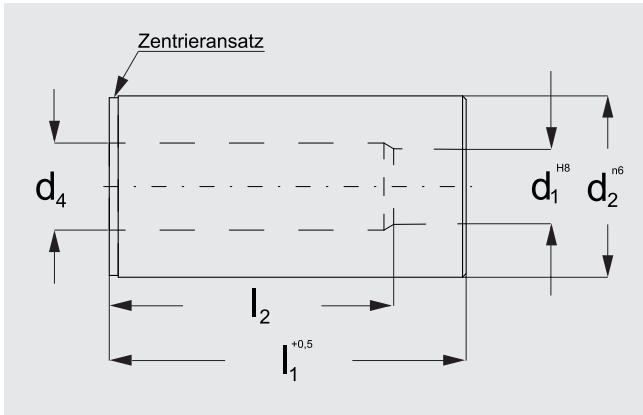


**Werkstoff:**  
HSS, gehärtet  
Härte: 62 ± 2 HRC

**Ausführung:**  
Durchmesser d<sub>1</sub>, d<sub>2</sub>, sowie Stirflächen geschliffen.

**Bestellbeispiel:** d<sub>1</sub> = 6,2, l<sub>1</sub> = 20  
B21.0620.020

B21.



d <sub>1</sub>	Stufung	d <sub>2</sub>	d <sub>4</sub>	kurz		lang	
				l <sub>1</sub>	l <sub>2</sub>	l <sub>1</sub>	l <sub>2</sub>
0,5 – 1,0	0,1	5	d <sub>1</sub> <sup>+0,3</sup>	20	18	–	–
1,1 – 2,0		6	d <sub>1</sub> <sup>+0,3</sup>	20	17	28	25
2,1 – 3,0		7	d <sub>1</sub> <sup>+0,5</sup>	20	17	28	25
3,1 – 4,0		8	d <sub>1</sub> <sup>+0,5</sup>	20	17	28	25
4,1 – 5,0		10	d <sub>1</sub> <sup>+0,7</sup>	20	16	28	24
5,1 – 6,0		12	d <sub>1</sub> <sup>+0,7</sup>	20	16	28	24
6,1 – 8,0		15	d <sub>1</sub> <sup>+0,7</sup>	20	16	28	24
8,1 – 10,0		18	d <sub>1</sub> <sup>+1</sup>	20	16	28	24
10,1 – 12,0		22	d <sub>1</sub> <sup>+1</sup>	20	15	28	23
12,1 – 15,0		26	d <sub>1</sub> <sup>+1</sup>	20	15	28	23
15,1 – 18,0		30	d <sub>1</sub> <sup>+1</sup>	–	–	28	23