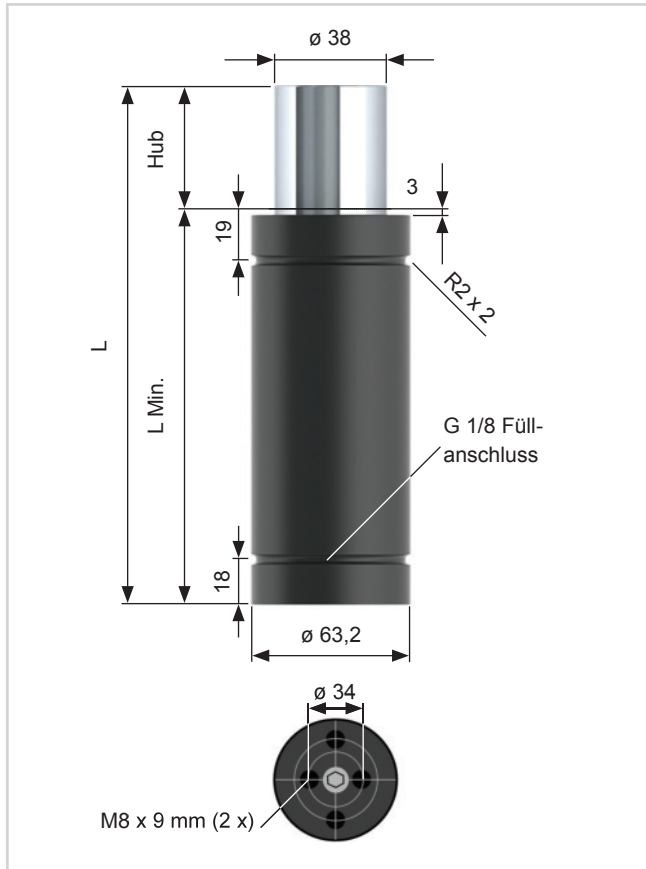


HDG.03000.

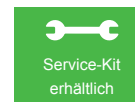


| Artikel-Nr.: Typ/Hub | Kraft (daN) | | L Min. | L | Gas Vol. (l) | Weight (Kg) |
|-------------------------|-------------|---------|--------|-----|-----------------|----------------|
| | Minimum | Maximum | | | | |
| HDG.03000.010 | 2950 | 3850 | 75 | 85 | 0,08 | 1,1 |
| HDG.03000.016 | | 4100 | 87 | 103 | 0,12 | 1,3 |
| HDG.03000.025 | | 4300 | 105 | 130 | 0,16 | 1,5 |
| HDG.03000.032 | | 4420 | 118 | 150 | 0,20 | 1,6 |
| HDG.03000.040 | | 4520 | 135 | 175 | 0,24 | 1,8 |
| HDG.03000.050 | | 4580 | 155 | 205 | 0,29 | 2,1 |

Hinweis:

Spezial-Hublängen auf Wunsch möglich.

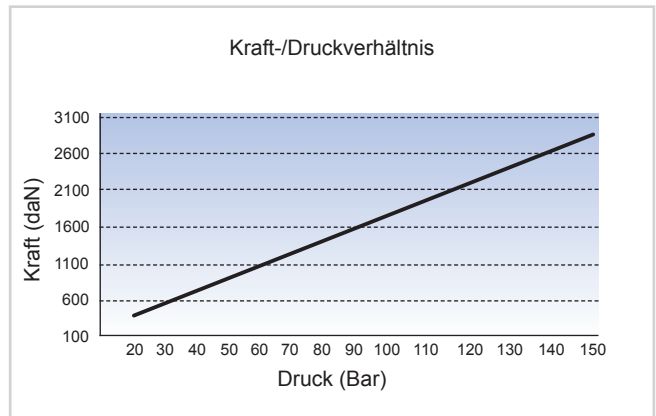
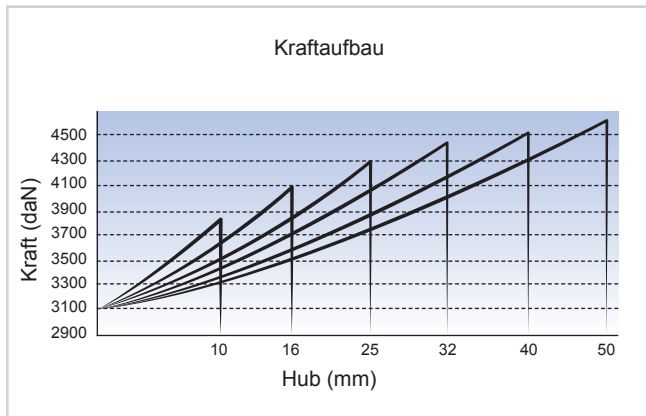
Bestellbeispiel: Typ x Hub + Befestigung
HDG.03000.050.FF



PED
97/23/EC

Nur Nitrogen verwenden!

| | | |
|---------------------|--------------------|--|
| Max. Druck: 150 Bar | Min. Druck: 20 Bar | Max. Kolbengeschwindigkeit: 0,8 m/Sek. |
|---------------------|--------------------|--|



Befestigungsvarianten

(Alle Abmessungen in mm.)



4 x M8 Gewindebohrung



Square Front Flange 63 SFF – 63 SFFA